

No change on the site yet, so no photo update this time.

Building Regulations, and Building Control

Just a few more hoops we still have to jump through!

Previous delays with the project mean that we now have to comply with much stricter rules (updated 2022) to do with energy efficiency. This means that the original plans we had for insulating the building have now been significantly upgraded. When complete, the shed will be just as efficient as a new-build house.

Although this will add to the insulation cost, it will reduce our energy bill even further than planned. The floor and ceiling will now have to be a little bit closer to each other! but it's not a problem - honest.



The Containers

Prest Engineering are about to order our shipping containers ready to begin the conversion. These high-cube units will be transported from Liverpool to their site in Scruton to have side panels removed and steel reinforcement added - The structural integrity of the finished shell will be certified by Prest.

It all starts soon

Permission from our landlord to get started is now imminent. The first stage will see Calverts levelling the site, and providing our gardeners with some much needed extra top-soil for their raised beds and borders. So expect pictures of major earthworks and happy gardeners in the next edition!

In the meantime.....

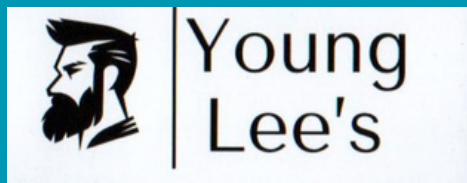


This year, Leyburn Arts and Community Centre will be using the funds raised from the summer raffle to support the Community Shed Project.

Tickets (£1 each) are now available from our main reception Monday to Friday 9am - 4pm



There will be a great range of prizes thanks to generous donations from individuals and these local businesses.



We hope this will be our best raffle ever!

The draw will take place on 16th September at our Community Shed information event - more details about this soon.

